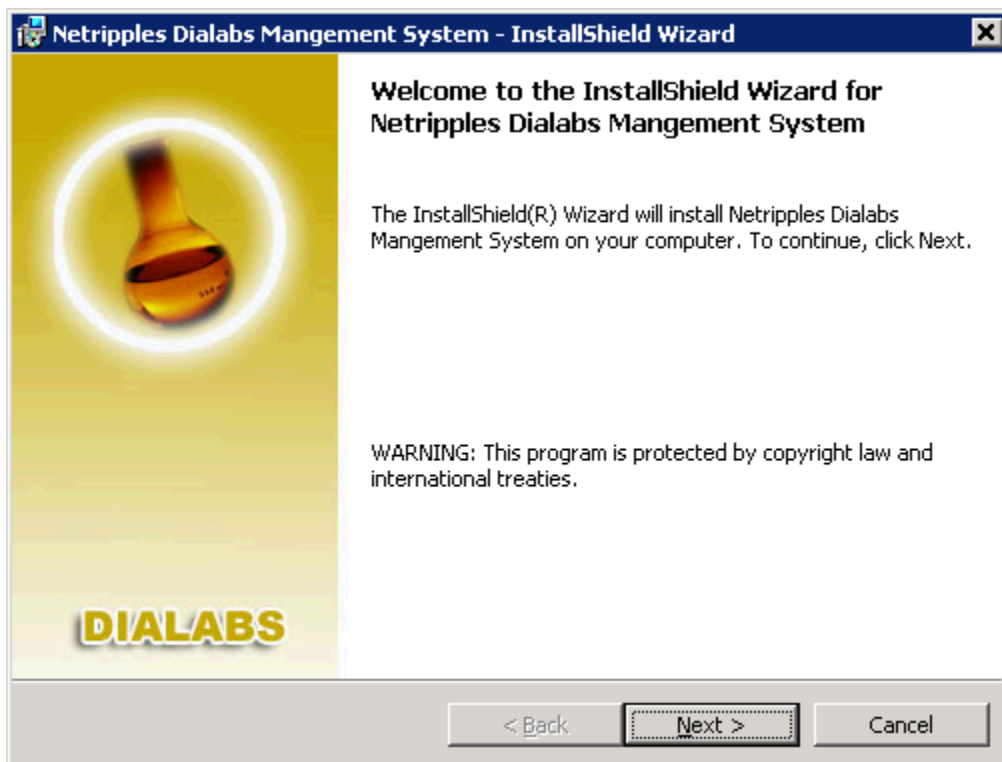


Steps for Installing the Netripples Dialabs Clinical System.

After downloading the software extract the downloaded software and find the below path of setup icon to run the set up.

Path : Open BBMS 5.0 setup folder, then open Dialab Management System folder, then open Product Configuration1 folder, open Release 1 folder, open Disk Images Folder, Open Netripples BBMS 5.0 Setup Folder, Find the Setup Icon and double click on it to run the setup.


Step 1: Click on the [Next >] button .On clicking [Next>] button it will open License Agreement screen. Read the EULA agreement carefully and click on the **I accept the terms in the license agreement** radio button .click the [Next>] button as shown below



Dialab Management System - InstallShield Wizard [X]

License Agreement

Please read the following license agreement carefully.



END-USER LICENSE AGREEMENT FOR NETRIPPLES SOFTWARE APPLICATIONS
IMPORTANT-READ CAREFULLY: This End-User License Agreement ("EULA") is a legal agreement of Netripples group of companies worldwide and it accompanies any System software that accompanies this EULA. YOU AGREE TO BE BOUND BY THE TERMS OF THIS EULA BY INSTALLING, COPYING, OR USING THE SOFTWARE. IF YOU DO NOT AGREE, DO NOT INSTALL, COPY, OR USE THE SOFTWARE.

1. GRANT OF LICENSE. Netripples grants you the following rights provided that you comply with all terms and conditions of this EULA:

1.1 Installation and use. You may:

I accept the terms in the license agreement

I do not accept the terms in the license agreement

Print

InstallShield

< Back Next > Cancel

Step 2: Enter User Name and Organization name in the text fields and click on the **[Next>]** button.

Customer Information
Please enter your information.

User Name:
WILLIAMS

Organization:
KING GEORGE HOSPITAL

InstallShield

< Back Next > Cancel

Step 3: Select **Complete** radio button and click on the **[Next>]** button to start the installation process.

Setup Type
Choose the setup type that best suits your needs.

Please select a setup type.

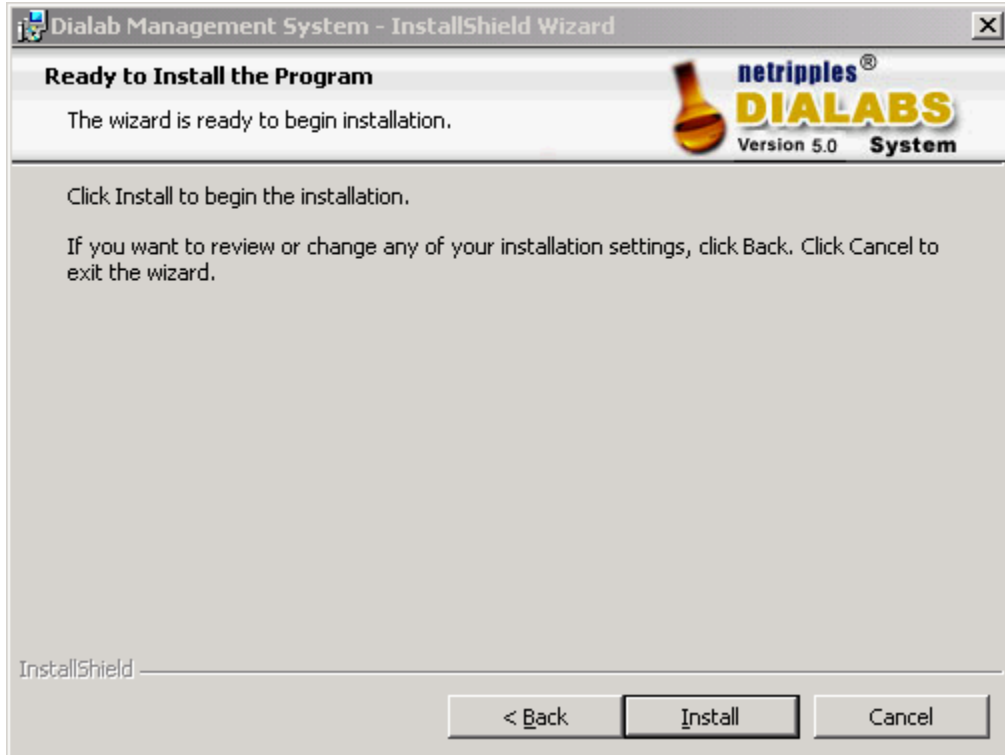
Complete
All program features will be installed. (Requires the most disk space.)

Custom
Choose which program features you want installed and where they will be installed. Recommended for advanced users.

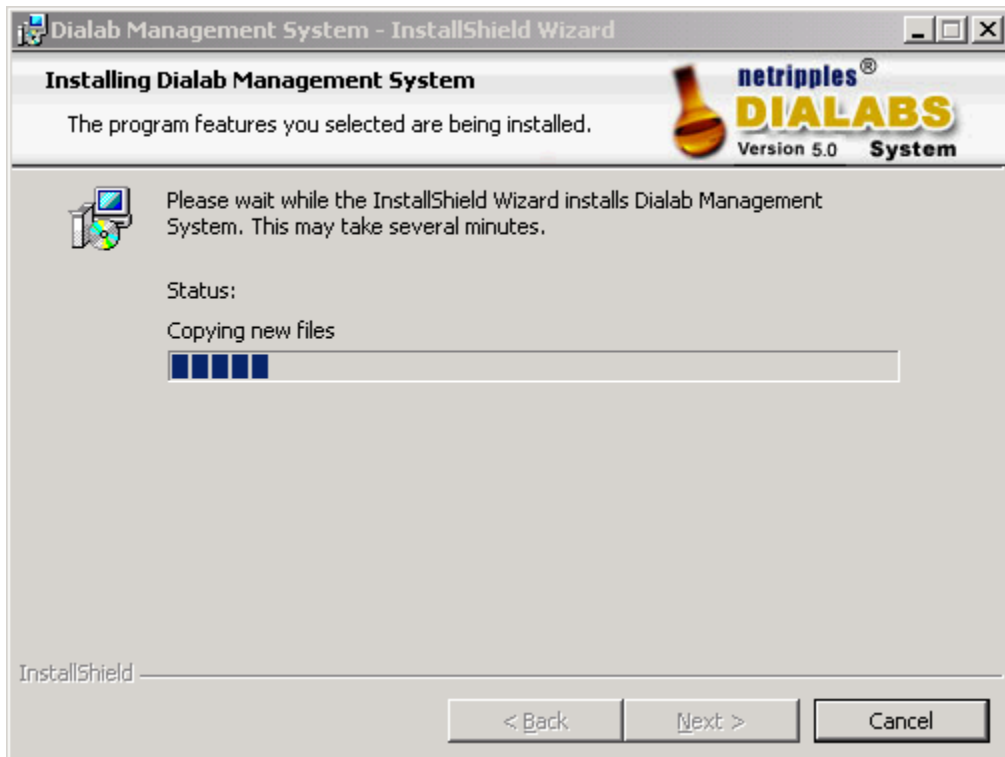
InstallShield

< Back Next > Cancel

Step 4: Click on the [Install] Button to start the installation process.



Step 5: Now the installation process may take few minutes while installing



Step 6: Click on the **[Finish]** button to complete the installation Process



After installation please follow the screen help to run the application

Software Icon :

